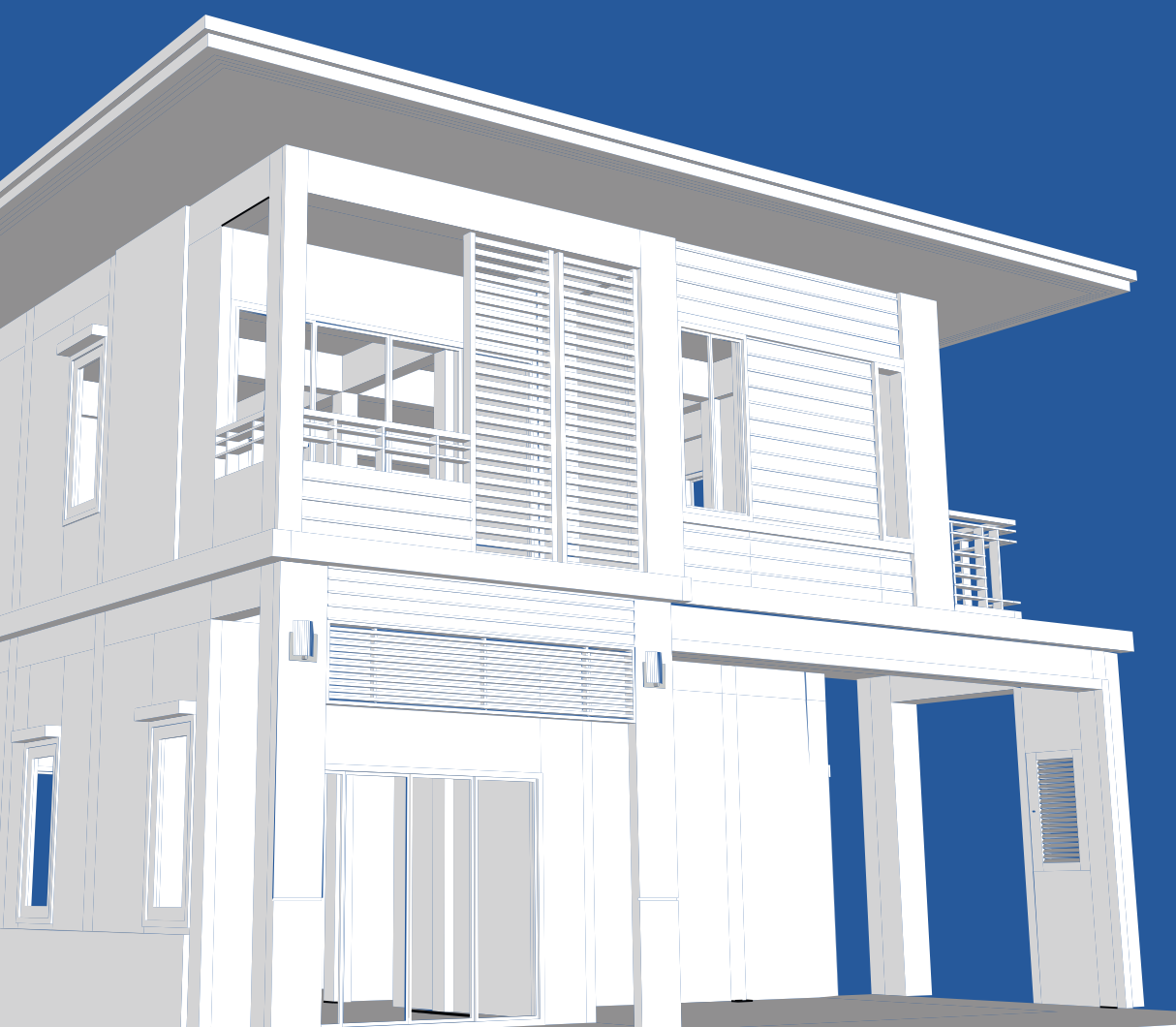




A history of trust and
innovation in construction
chemicals



PRODUCT GUIDE

By combining our extensive product range with our team's expertise and experience, PAMR provides construction companies with tailored solutions to meet the needs of the industry. Our complete range of solutions includes:

Waterproofing Compound

Repair Mortors

Grouts & Grouting Compounds

Concrete Admixtures

Tile and Stone Fixing Solutions

Adhesive & Sealants

Floor Hardeners

Protective Coating



Who We Are

PAMR Industries is an ISO 9001:2015 certified company and is resolved to ensuring environment-friendly processes and systems. In addition to construction chemicals, we provide world-class services in the industrial and construction segments, including technical support, application, distribution, and after-sales service. We are an organisation that is constantly innovating and upgrading to match international benchmarks in quality.

At PAMR, we firmly believe that a solid pillar of trust between the company and its investors, customers, partners, and employees is paramount for any business. We aim to serve the needs of our clients and create value for our stakeholders by becoming the most efficient and innovative construction chemicals company. We invest in building and maintaining lasting relationships.

Our Vision

Our vision is to be an innovation and technology-led company for all construction needs, known for our supreme quality product line throughout the country, aligned with the Make in India focus of increasing domestic production.

Our Mission

Our Mission is to bring together a sturdy infrastructure of brilliant minds, concrete work ethics, and transparency, to deliver the best experiences and products to our clients. We are in tune with India's Make in India vision and strive to build valuable client relationships.

PRODUCT INDEX

1 Waterproofing Compound

1.1	Wetproof IWP : Integral Waterproofing Compound in Liquid Form	6
1.2	Krystalin : Crystalline Integral Waterproofing Compound in Powder Form.....	6
1.3	Krystacoat Super : Cementitious Crystalline Waterproofing Coating System for Concrete.....	7
1.4	Ultralatex : SBR Latex Based Multipurpose Polymer for Waterproofing and Repair Mortar.....	7
1.5	Proofcrete : Acrylic Polymer Based Cementitious Waterproofing Coating and Repair Mortar.....	8
1.6	Elaston 2C : Acrylic Polymer Modified Two Component Cementitious Flexible Waterproofing Coating.....	8
1.7	Elastosuper : Two Component Elastomeric, High performance and Highly Flexible Waterproofing Coating.....	9
1.8	Extrocoat : Acrylic Based Elastomeric High Performance Exterior Waterproof Coating.....	10
1.9	Elastofix : Elastomeric, Moisture Cured Polyurethane Based Liquid Applied Waterproofing Coating.....	10
1.10	Elastofix PUA : High Performance Hot-applied Polyurea Based Waterproof Coating.....	11
1.11	AlkaFlex PV : Twin-Color PVC Membrane for Basement and Tunnel Waterproofing.....	12
1.12	AlkaFlex HDPE : Pressure Sensitive Pre-applied HDPE Membrane for Waterproofing.....	12
1.13	AlkaFlex APP : APP Modified Bituminous Membrane for Waterproofing.....	13
1.14	AlkaFlex EPDM : EPDM Based Waterproofing Sheet Membrane.....	14
1.15	Repelicon-S : Silane/Siloxane Based Penetrating, Water Repellent Sealer Solvent Based.....	15

2 Repair Mortars

2.1	Ultracrete CPG 40 : Polymer Modified Fiber-Reinforced Cementitious Mortar.....	17
2.2	Ultracrete CPG 60 : Polymer Modified Fiber-Reinforced High Strength Cementitious Mortar.....	18
2.3	Ultracon MC 70 : Pre-packaged Mix Cementitious Flowable Micro Concrete.....	18
2.4	Repoxy AS : Thixotropic Anti-Sagging Solventless High Strength Epoxy Mortar.....	19
2.5	Repoxy G100 : Solventless Ultra-High Early and Ultimate Strength pourable Epoxy Mortar.....	19
2.6	Repoxy G1821 : Three component Solventless High Strength Repair Epoxy Mortar.....	20

3 Grouts & Grouting Compounds

3.1	Ultragrout 70 : Single Component, Free Flow, Non-shrink High Strength Cementitious Grout.....	22
3.2	Ultragrout 90 : Free Flow, Non-Shrink ultra-High Strength cementitious Precision Grout.....	22
3.3	Rockmix GA : Plasticized Expanding Grout Admixture.....	23
3.4	Rockmix CGR : Ready to Use Cementitious Cable Grout.....	23
3.5	Repoxy P 18 : Ultra-Low Viscosity Solventless High Strength Injectable Epoxy.....	24
3.6	Repoxy P 30 : Low Viscosity Solventless High Strength Injectable Epoxy.....	25
3.7	Repoxy G521 : Three Component Solventless High Strength Pourable Epoxy Mortar.....	25

4 Concrete Admixtures

4.1	Ultramix 7500 : Mid-Range Superplasticizer for Concrete.....	28
-----	--	----

PRODUCT INDEX

4.2	Ultramix 7100PQ : Mid-Range Superplasticizer for PQC Concrete.....	2
4.3	Ultramix 8000 : Super Plasticizing Admixture for High performance Concrete 2.....	8
4.4	Ultramix 8100S : Super Plasticizing Admixture for High Performance SCC Concrete.....	29
4.5	Ultracast HE 5050 : Mid-Range Early Strength Super Plasticizer.....	29
4.6	Ultracast HE 8050 : High-Range Early Strength Superplasticizer.....	30
4.7	Rockmix 2060 : SNF Based Water Reducing Admixture.....	31
4.8	Rockmix 4160 : SNF Based High Range Water Reducing Superplasticizer.....	31
4.9	Tufsil (Miro Silica) : A Mineral Admixture for Concrete.....	32

5 Tile and Stone Fixing Solutions

5.1	Flooron Tile Adhesive : Cement Based Tile Adhesive for Interior Ceramic Tile Application.....	35
5.2	Vitron Tile Adhesive : Cement Based Tile Adhesive for Interior Ceramic Tile Application.....	35
5.3	Vitron Plus Tile Adhesive : Cement Based Tile Adhesive for Interior Large Format Tile and Stone Application.....	36
5.4	Extron Tile Adhesive : Cement Based Tile Adhesive for External Large Format Tile and Stone Application.....	36
5.5	Extron Plus Tile Adhesive : Cement Based Tile Adhesive for External Large Format Tile and Stone Application.....	37
5.6	Ultron Tile Adhesive : Epoxy Based Tile Adhesive for External Large Format Tile and Stone Application.....	37
5.7	Ultron Flexi Tile Adhesive : Pu-Epoxy Based Tile Adhesive for External Large Format Tile and Stone Application.....	38
5.8	Grouton Cementitious Grout : Cement Based Tile Grout.....	39
5.9	Grouton Epoxy 2K : Epoxy Based 2 Component Tile Grout.....	39
5.10	Shineon : Tile Cleaner.....	40

6 Adhesive & Sealants

6.1	Repoxy AEA : Solventless High Strength Anti-Sagging Epoxy Adhesive.....	42
6.2	Repoxy AS : Thixotropic Anti-sagging Solventless High Strength Epoxy Mortar.....	42
6.3	Repoxy BA : Solvent Less Epoxy Bonding Agent for Joining Old Concrete to New Concrete.....	43
6.4	Repoxy SB : Segmental Bridge Epoxy Adhesive.....	44
6.5	Ultraseal PS : Fuel and Effluents resistant Polysulphide Based Joint Sealant.....	44
6.6	Elastoswell : Hydrophilic Swellable Joint Sealant Strip.....	45
6.7	Ultraseal PU : One Component PU Sealant.....	45

7 Floor Hardeners

7.1	Rockfloor NM : Non-Metallic Floor Hardener.....	48
7.2	Rockfloor M : Abrasion Resistant Metallic Floor Hardener.....	48

8 Protective Coating

8.1	Thermo-Safeguard : UV-Resistant Waterproofing and Heat/Solar Reflectance.....	5
8.2	Ultraguard HE : Anti-Carbonation and Crack Bridging, Elastomeric Waterproof Coating.....	1

1. Waterproofing Compound



1.1 Wetproof IWP

(Integral Waterproofing Compound in liquid form)

Introduction of product

WetProof IWP is an integral waterproofing admixture for cement concrete and mortar. WetProof IWP blocks the passage of water from both the positive and negative sides of concrete structures.

Features

- Chloride free, no effect of setting time of concrete and mortar.
- Conforms to IS2645:2003
- Reduces water absorption and dampness.
- Reduces efflorescence and fungus growth.

Area of Application

- Roof slabs and Screeds
- External and internal wall plastering
- Sloped Roof Slab, Flat Roof Slab
- Basements
- Bathrooms and balconies Water retaining structure

Method of Application

- Mix all ingredients of concrete and plaster with approx., 75% of mixing water and mix for 1-2 minutes.
- Dilute Wetproof IWP with 10-15% of mixing water and add to the mixer and mix for 1-2 minutes.
- Add the remaining part of the mixing water and continue mixing for 1-2 minutes.
- Discharge the mix from mixing drum and place the mixed concrete/ mortar and finish it.

Dosage

200g per 50kg of cement

Packing

200g, 1kg, 5kg, 20kg, 50kg, container.

1.2 Krystalin

(Crystalline Integral Waterproofing Compound in powder form)

Introduction of product

Krystalin is hydrophilic crystalline integral waterproofing admixture for concrete and mortar. It is composed of high-grade cement, silica sand, minerals, and special chemicals.

Features

- Superior waterproofing and self-sealing properties up to 0.5mm.
- Permanent Waterproofing
- Developed crystals are insoluble in water.
- Uniform water proofing throughout the entire concrete structures.
- Enhance durability of exposed concrete and plasters.

Area of Application

- All water-retaining concrete structures.
- Basement Raft and walls
- Water tanks
- Tunnel lining
- PQC Pavement.
- Roof slabs, podium slabs.

Method of Application

Krystalin is a powder that can simply be added to the batching plant along with cement-sand aggregate. Add water and other admixture and mix as per standard method

Dosage

0.8% to 1.2% by weight of cement.

Packing

20kg waterproof HDPE bag

1.3 Krystacoat Super

(Cementitious Crystalline Waterproofing Coating System for Concrete)

Introduction of product

Krystacoat Super is a single component, high performance, cementitious crystalline waterproofing coating system. Its coatings are resistant to hydrostatic pressure and capillary penetration of water.

Features

- Penetrates concrete, seals capillaries and hairline cracks, and remains waterproof even if surfaces are damaged.
- Self-healing of cracks up to 0.5mm.
- Withstands positive and negative hydrostatic pressure for dual-sided waterproofing.
- It can be applied in both new as well as old constructions.

Area of Application

- All water-retaining concrete structures.
- Basement Raft and walls
- Water tanks
- Tunnel lining
- Roof slabs, podium slabs.
- Very Effective for negative side waterproofing.

Method of Application

- Mix Krystacoat Super with 30 to 35% of potable water to slurry consistency with a slow speed paddle mixer.
- Pre-wet the concrete surface (SSD condition) with water.
- Apply the freshly mixed slurry with a soft nylon brush within 30 minutes of mixing or before the mix becomes thick.
- Apply the second coat when the first coat becomes dry.
- Start curing of coating after overnight of application or after 12-16 hours from the application time of final coat.
- Continue curing for 2-3 times a day for 2-3 days.

Coverage

1.5 to 2kg per sq. m in 2 coats.

Packing

20kg waterproof HDPE bag.

1.4 Ultralatex

(SBR Latex Based Multipurpose Polymer for Waterproofing and Repair Mortar)

Introduction of product

Ultralatex is styrene Butadiene rubber (SBR) latex based multipurpose polymer for high performance waterproofing and repairs applications for concrete.

Features

- For preparing polymer modified mortar for repairs and waterproofing coating.
- Bonding agent for plastering and bonding old concrete to new concrete.
- It is a durable and breathable membrane.
- Develops excellent bond with most building materials.
- Reduces shrinkage.
- Reduces water permeability.

Method of Application

- For repair mortar, mix Ultralatex: Water: Cement: sand in the ratio of 1:4:8:24. Keep mixing till it forms a mortar consistency and now apply it with trowel.
- For bond coat, mix Ultralatex: water: Cement in the ratio of 1:1:4 and apply with brush.
- For Waterproof coating, mix Ultralatex: Cement in the ratio of 1:2 by wt. Apply this slurry by brush on prepared substrate surface.

Dosage

For Repair Mortar:

2m²/kg/10mm thickness

Bond coat – old to new concrete:

3-5m²/kg

For high-performance waterproof coating:

2m²/kg

Area of Application

- For waterproofing of roof terraces, toilets, bathrooms, chhajjas, lift pits, balconies, water tanks, sunshades, bricks work etc.
- Bonding between old to new concrete
- High performance polymer modified repair mortar.

Packing

5kg/20kg/50kg

1.5 Proofcrete

(Acrylic Polymer Based Cementitious Waterproofing Coating and Repair Mortar)

Introduction of product

Proofcrete is acrylic based multipurpose polymer for high performance waterproofing coating and polymer modified repair mortar

Features

- Provides a tough, flexible, hard-wearing surface with waterproofing.
- For making polymer modified mortar for repairs of cracks, honeycombs and potholes.
- Bonding agent for plastering and bonding old concrete to new concrete.
- Improves tensile and flexural strength with age.

Area of Application

- For waterproofing of roof terraces, toilets, bathrooms, chhajjas, lift pits, balconies, water tanks, sunshades, bricks work etc.
- Bonding between old to new concrete.
- Used as high-performance repair mortar for construction joint treatment.

Method of Application

- For waterproof cement slurry, mix 1part ProofCrete with 2-parts of fresh cement. Apply it with a nylon brush.
- For repair mortar, mix 1-part ProofCrete with 2-parts of cement and 6-parts of dry silica sand/washed sand; apply it with trowel.
- For bond coat, mix 1-part of ProofCrete with 2-part of cement and 1-part of silica sand

Dosage

Waterproof coating:

2-2.5m² /kg

Bond Coat:

1.5-3m² /kg

Repair Mortar:

2m²/kg/10mm thickness mortar.

Packing

5kg/20kg/50kg

1.6 Elaston 2C

(Acrylic Polymer Modified Two Component Cementitious Flexible Waterproofing Coating)

Introduction of product

PAMR Elaston 2C is acrylic polymer modified two component cementitious, elastomeric waterproofing coating system.

Method of Application

- The material is supplied in two parts, and premeasured. Slowly add the powder to the liquid and mix using a slow speed paddle mixer (300-400 rpm). Do not mix more materials than that can be used within 35 minutes. The appearance of the material will be creamy consistency. Apply it with soft nylon brush on prewet surface.

Features

- Protection for concrete against carbonation and chloride attack.
- Excellent Bonding Properties.
- Excellent Waterproofing.
- Good adhesion to almost all surfaces.
- Resistant to positive (6bar) and negative (2bar) hydrostatic pressure.
- Crack bridging capacity up to 1mm.

Area of Application

- General construction, water and damp proofing, basements, and concrete structures.
- For Interior and exterior waterproofing, roof, water tanks, shower area, kitchens as an under tile protective membrane.

Coverage

1.6-2kg/m² in two coats.

Packing

17.5kg

1.7 Elastosuper

(Two Component Elastomeric, High performance and Highly Flexible Waterproofing Coating)

Introduction of product

PAMR ElastoSuper is high performance acrylic polymer modified two component cementitious waterproofing coating system based on selected liquid polymer and powder.

Features

- Protection for concrete against carbonation and chloride attack.
- Excellent Bonding Properties.
- Excellent Waterproofing.
- Very high Elongation (>180%).
- Crack-bridging capacity > 3mm.
- Good adhesion to almost all surfaces.
- Resistant to positive (6bar) and negative (2bar) hydrostatic pressure.

Area of Application

- General construction, water and damp proofing, basements, and concrete structures.
- For Interior and exterior waterproofing, roof, water tanks, shower area, kitchens as an under tile protective membrane.
- Seals pre-cast joints: high elongation can accommodate pre-cast joints sealing.
- Water and dampproof lining for water retaining structures.

Method of Application

- Slowly add the powder to the liquid
- ix using a slow speed paddle mixer (300-400 rpm).
- Do not mix more materials than that can be used within 35 minutes.
- The appearance of the material will be creamy consistency.
- Apply it with soft nylon brush on prewet surface.

Coverage

1.4-1.8kg/m² in two coats.

Packing

12.5kg

1.8 Extrocoat

(Acrylic Based Elastomeric High Performance Exterior Waterproof coating)

Introduction of product

PAMR ExtroCoat is a single component highly elastomeric, High Performance Exterior waterproof coating. It is a tough yet highly flexible, UV resistant and durable heavy-duty coating.

Features

- Excellent Elongation and Tensile strength properties to ensure high crack-bridging capacity.
- UV Resistance and No deterioration, No color fade.
- Excellent resistant to algae and fungi growth.
- Excellent dirt pick-up resistance.
- Water-vapor permeable.

Area of Application

- Waterproofing of flat and slant roof, pitch roofs, Terrace.
- Protective coating for block works before fixing metal Composite Panels.
- It can be used on exterior masonry, concrete, cement, sand rendered surfaces.
- Waterproofing of corrugated AC sheet roofing/metal sheets etc.

Method of Application

- For the best results, use PAMR Basecoat Prime as primer.
- Stir well to get uniform consistency.
- Directly apply from bucket with a soft nylon brush/roller.
- Can be applied with airless spray.
- Each layer of coating thickness should not exceed 500 microns (WFT).
- Apply the next coat when the previous coating is dry (4-10 hours depending on ambient condition).

Coverage

1.2 to 1.4 kg/m² in two coats.

Packing

5kg/20kg

1.9 Elastofix

(Elastomeric, moisture cured Polyurethane Based Liquid Applied Waterproofing Coating)

Introduction of product

PAMR ElastoFix is based on pure elastomeric bitumen/coal tar free hydrophobic polyurethane resin which results in excellent waterproofing coating conforming to **ASTM C836/C836M-18 & ASTM C 898-09**.

Features

- Excellent elongation (>550% and tensile strength (2.5N/mm²).
- 100% bitumen and coal tar free.
- Crack bridging capacity >5mm.
- Excellent resistance to root penetration.
- No leakage at 7bar hydrostatic pressure.
- Suitable for service temperature from -30°C to 140°C.

Method of Application

- Repair of cracks and potholes.
- Moisture Checking & grinding.
- Application of Primer- ElastoFix Primer/Elastofix Primer PU.
- Stir well the ElastoFix.
- Apply of PAMR ElastoFix at least in two coats by brush/roller/airless spray.
- Protect PAMR ElastoFix coating with screed /plaster/dimple board.

Coverage

Area of Application

- Roof
- Podium
- Basement
- Swimming pool
- Planter area
- Other wet areas.

Packing

25kg

Elastofix PUA

(High Performance Hot-applied Polyurea Based Waterproof Coating)

Introduction of product

Elastofix PUA is solvent free spray applied fast setting 2-component polyurea coating for high performance waterproofing and protective coating for Concrete and metal substrate. Elastofix PUA is mainly used for waterproofing of Basement, retaining walls, podiums, terrace swimming pools, Roofs of high-end buildings and infra projects.

Features

Very high elongation (>400%) and tensile strength (>16N/mm²)
No shrinkage-100% solid
Meets the requirements of green building specifications.
Build-up thickness up to 4mm can be made in one go due fast set property (sets in 20-30 seconds).
Seamless application- no joints- zero chance to water penetration.
Anti-root property.
No sagging on vertical and overhead application with any thickness.
Retains flexibility even at -30°C.

Area of Application

- Bridge deck
- Basement raft
- Retaining walls
- Tunnel lining
- Truck bed
- lining
- Flat/slope roof
- Podium

Method of Application

Ensure the substrate is adequately strong (Compressive strength >20MPa)
Repair all visible cracks with epoxy mortar.
Ensure substrate moisture is less than 5%
Ensure the RH is less than 80%
Ensure there is no rising dampness / moisture migration through the concrete substrate. (this may cause blistering during hot weather)
Apply solventless epoxy primer (PAMR Repoxy P100)
Apply the Polyurea coating the primed surface (primer should be in touch dry condition).

Note: Several grades are available depending on jobsite requirements

Packing

Recommended film thickness: 1.5mm (minimum)

Coverage: 1.1-1.2kg/mm/m²

Packing: 460kg

1.11 Alkaflex PVC

(Twin-Color PVC Membrane for Basement and Tunnel) Waterproofing)

Introduction of product

AlkaFlex-PVC is an elastomeric non-reinforced plasticized PVC (polyvinyl chloride) membrane designed for high performance waterproofing of building basement, retaining walls, roofs, podium, road/rail tunnels.

Features

- Good Elongation and tensile strength.
- Can be tested all joints for watertightness.
- Better visibility due to yellow color signal layer.
- Double weld seam allows to air pressure testing of joints.
- Does not rot.
- Long life expectancy
- Root resistance.
- No damage of membrane due to structural movement.

Area of Application

- Basement of Building
- Retaining Walls
- Flat Roof
- Utility Deck
- Podium
- Roof Renovation
- Tunnel lining

Method of Application

- Surface should be cleaned, and no stagnant water should be there.
- Lay the geotextile.
- Unroll the PVC membrane on Geotextile.
- Join the PVC membrane with heat welding machine.
- Check the joint with air pressure.
- Lay another layer of Geotextile.
- Provide protection screed over geotextile.

Packing

20mx 2m Rol

1.12 AlkaFlex HDPE

(Pressure Sensitive Pre-applied HDPE Membrane for Waterproofing)

Introduction of product

AlkaFlex HDPE is an elastomeric non-reinforced sheet membrane with thick HDPE film and pressure sensitive special adhesive for high end waterproofing of basement. When concrete is poured on AlkaFlex HDPE, it strongly adheres with concrete and prohibits water passage laterally through joints.

Features

- Very high tensile strength and elongation
- Excellent peel adhesion strength
- Very food puncture resistant.
- Excellent water borne chemical resistant.
- Does not leach-out harmful plasticiser from installed membrane.
- Forms an integral part of poured concrete.
- No effect of soil settlement and structural movement.

Method of Application

Surface should be cleaned, levelled and dry. Ensure no standing water present before installation. Surface should be free from sharp projection. Lay the first roll with careful alignment. Lay the adjacent roll overlapping the side over the adhesive sleeve of previous roll. Press the joint firmly using a steel roller.

Area of Application

- Protection of Concrete foundation.
- Basement raft
- Retaining Wall (Post Applied)
- Cut and cover tunnels.

Packing

Packing: 1.2m x 30m Roll.

1.13 AlkaFlex APP

(APP Modified Bituminous Membrane for Waterproofing)

Introduction of product

Alkaflex APP is factory made sheet membrane reinforced with polyester fibre, refined bitumen and selective fillers and additive.

Features

Pre-determined thickness for desired properties.
Hi softening point resists flow during hot climatic condition.
High tensile strength and elongation.
Various thickness (2mm, 3mm, 4mm) available.
Available with mineral finish for UV resistance when kept in exposed condition.

Method of Application

Surface should clean, dry and free from loose material.
Apply bituminous primer.
Unroll the membrane on primed surface with torch-on method.
Unroll second roll adjacent to the existing roll with side overlap of 100mm.
Ensure the overlap joints are secure with each of roll edge.

Area of Application

- Underground structures
- Low slope concrete / metal roof/ flat
- roof Tunnel lining
- Multi-level Car parking area, etc.
- Podium

Packing

Packing: 10mx1m

Density:

3mm Roll: 3.8kg to 4.2kg /m²

4mm Roll : 4.8kg to 5.1kg/m²

1.14 AlkaFlex EPDM

(EPDM Based Waterproofing Sheet Membrane)

Introduction of product

Alkaflex EPDM is ethylene-propylene-diene - monomer (EPDM) rubber based single-ply pre-formed highly elastomeric membrane for high end waterproofing of roof, basement, retaining wall, pond lining and tunnel lining.

Features

- High elongation, tensile strength.
- Excellent tear resistant
- Excellent UV resistant
- High flexibility even at sub-zero temperature (up to -40°C)
- Excellent chemical resistant
- No maintenance
- Can be loosely laid or adhere with substrate with adhesive.
- Highly capable to withstand structural movement.

Area of Application

- Underground structures
- Low slope concrete / metal roof/flat roof.
- Tunnel lining
- Multi-level Car parking area, etc.
- Pond lining Podium
-

Method of Application

Surface should be clean, dry and free from any loose material.

Any crack/ voids shall be rectified before laying if membrane.

Unroll the first membrane on clean surface.

Unroll the second membrane adjoining to the first membrane with 50mm (minimum) overlap.

Apply PAMR EPDM PRIME at the edge of joint.

Allow it to touch dry for few minutes.

Immediately press the top edge of second adjoining membrane. Use steel or silicone roller with adequate

pressure for positive contact between the membrane.

Repeat this activity for next membrane and longitudinal joints and rectification job.

1.15 Repelicon -S

(Silane / Siloxane Based Penetrating, Water Repellent Sealer (Solvent Based))

Introduction of product

Repelicon -S is a organic solvent based, ready to use, penetrating, colorless, non-yellowing, breathable silane & siloxane-based water repellent compound for exposed concrete or masonry works and stone cladding.

Features

- No Alkaline silicone
- No change of color
- No change of texture
- Excellent water repellence.
- Only single coat application
- Treated surface does not allow algae and fungus growth.
- Properly treated surface is highly durable.

Area of Application

- Exterior Stone cladding
- Brick tiles
- Architectural exposed concrete

Method of Application

- Directly apply Repelicon on to the clean dry substrate surface with Spray or brush.
- Apply liberally and allow it to penetrate.

Coverage

2-5 m² /l depending on surface porosity.

2. Repair Mortars



2.1 Ultracrete CPG 40

(Polymer Modified Fiber-Reinforced Cementitious Mortar)

Introduction of product

UltraCrete CPG40 is a single component, specially formulated, pre-blended polymer modified fiber-reinforced cementitious thixotropic repair mortar for vertical and overhead non-structural repairs to concrete and masonry surfaces

Features

- Bonds well to almost any surface
- Non-shrink.
- High initial and ultimate compressive strength of at least 40MPa at 28 days.
- Chloride free, making it a safe and durable surface option.
- Polymer modified for improved bond strengths and contained added corrosion inhibiting additives to help protect long term durability.
- Can be applied up to 40 mm in one layer.

Area of Application

- Various patching repairs to highways, bridge decks, industrial floors, ramps, loading docks, parking garage decks.
- It is ideal for use for the non-structural repair of concrete elements such as: floors screeds, concrete paving slabs, balcony edges, beams and lintels, stair treads and risers, producing gradients for ramp.
- Repair to damaged reinforced concrete elements

Method of Application

- Ultracrete CPG40 can be mixed with water by hand, mechanical mortar mixers or a slow speed (250- 400 rpm) paddle mixer.
- Mixing water addition should be typically 4 liters per bag, up to a maximum of 4.5 liters.
- Mixing time is 2 - 3 minutes till the product is thoroughly mixed uniform consistency.
- Pre-wet the surface with water.
- Apply Ultralatex bond coat for better adhesion.
- Apply the mixed mortar with trowel and finish it as per standard plaster application.
- Cure the surface with water for at least 5-7days.

Coverage

25 kg bag can cover 12-14 m² /10mm thickness.

Packing

25kg

2.2 Ultracrete CPG 60

(Polymer Modified Fiber-Reinforced High Strength Cementitious Mortar)

Introduction of product

UltraCrete CPG 60 is a single component, specially formulated, pre-blended polymer modified fiber-reinforced cementitious thixotropic repair mortar for vertical and overhead structural repairs to concrete.

Features

- Most of the properties similar to Ultracrete CPG 40.
- Used as structural concrete repair.
- High ultimate strength of at least 60MPa at 28 days.

Method of Application

- Ultracrete CPG40 can be mixed with water by hand, mechanical mortar mixers or a slow speed (250- 400 rpm) paddle mixer.
- Mixing water addition should be typically 4 liters per bag, up to a maximum of 4.5 liters.
- Mixing time is 2 - 3 minutes till the product is thoroughly mixed uniform consistency.
- Pre-wet the surface with water.
- Apply Ultralatex bond coat for better adhesion.
- Apply the mixed mortar with trowel and finish it as per standard plaster application.
- Cure the surface with water for at least 5-7days.

Area of Application

- Various patching repairs to highways, bridge decks, industrial floors, ramps, loading docks, parking garage decks.
- It is ideal for use for the non-structural repair of concrete elements such as: floors screeds, concrete paving slabs, balcony edges, beams and lintels, stair treads and risers, producing gradients for ramp.
- Repair to damaged reinforced concrete elements

Coverage

25 kg bag can cover 12–14 m² /10mm thickness.

Packing

25kg

2.3 Ultracon MC 70

(Pre-packaged Mix Cementitious Flowable Micro Concrete)

Introduction of product

UltraCon MC70 is a single component general purpose, non-shrink, cementitious micro concrete. It is suitable for repair of damaged reinforced concrete elements like slabs, beams, columns, walls, etc., where access is restricted, and compaction is not possible.

Features

- High compressive strength of at least 70 MPa at 28 days.
- Bonds well to almost any surface
- Flowable mortar hence can be used without compaction.
- Rapid strength gains to facilitate early reinstatement.
- Non-shrink
- Chloride free, making it a safe and durable concrete structure.
- Low mixing water demand.

Area of Application

- Extensive repairs of damaged concrete like beams, slabs, columns, and other structural elements
- Repair of structural members subjected to repetitive loading.
- For Jacketing of RCC columns and beam to increase load taking capacity (strengthening of a vertical member)
- Repair to damaged reinforced concrete elements

Method of Application

- Ultracon MC70 must be mixed by a slow speed (250–400 rpm) paddle mixer or revolving drum type mixer. To mix, the micro concrete needs to be added to water slowly whilst being constantly stirred. The amount of water needed varies depending on the desired workability.
- Water–powder ratio shall be varied from 0.13 to 0.17.
- Flowable mix can also be placed with low pressure cement grouting equipment or may be hand rodded into restrained sections. Ultracon MC 70 shall be used in the thickness range of 20mm to 75mm in single pour.

Coverage / Yield:

1900–2000kg /m³

Packing

25kg bag

2.4 Repoxy AS

(Thixotropic Anti-sagging Solventless High Strength Epoxy Mortar)

Introduction of product

Repoxy AS is a fast curing, 3 component thixotropic non-sagging solvent free Epoxy mortar for repairing vertical and overhead concrete structures, Sealing of concrete V-grooves, termination points of waterproofing membranes, etc.

Features

- Solvent free system – no shrinkage.
- No sagging) – suitable for vertical, overhead and horizontal application.
- High pot-life- enables sufficient time for repairing.
- Suitable for dry and slightly damp surfaces.
- Early high strength- minimum waiting time.
- Cured resin is resistance to a wide range of chemicals

Area of Application

- Use as repair mortar for vertical and overhead concrete structures like bridge and underpass, Industrial structures, commercial complexes, etc.
- Repair broken area of concrete edges.
- Can be used to fill tie rod holes and fixing of tie rods, etc.

Method of Application

- Repoxy AS is supplied as pre-measured quantity.
- Mix full quantity of Hardener with full quantity of Resin and filler.
- Mixing can be carried out with slow speed (250-400rpm) portable small paddle mixer for 1-2 minutes.
- Mix only sufficient materials for immediate requirements.

Coverage

1.75kg/m²/mm

Packing

6kg kit
(2x 6kg Carton box)

2.5 Repoxy G100

(Solventless Ultra-High Early and Ultimate Strength pourable Epoxy Mortar)

Introduction of product

Repoxy G100 is a moderately flowable, self-levelling, 3 component epoxy based ultra-high early cum ultimate strength grout/mortar designed for special purpose rail-track filling, horizontal groove sealing, pile cap dressing and structural consolidation.

Repoxy G100 conforms to ASTM C881

Features

- Very High compressive strength (>80MPa at 24hours and >100MPa at 7 days)
- Excellent adhesion with most of the building materials.
- High pot-life (>40 minutes)
- Solvent free- less to no shrinkage
- Low exotherm- enables high thickness of filling.
- Cured resin is resistance to a wide range of acids,

Method of Application

- Mix Resin and hardener as per mixing ratio with a slow speed paddle mixer.
- Add full quantity of filler while mixing.
- Pour the mixed components from one side to thickness of up to 25mm.
- For higher thickness of grout, apply in multiple layers with time gap of 8-20 hours.

Coverage

2.1kg/mm/m²

Area of Application

- Sealing of Cracks grooves in concrete up to 100mm
- Fixing of starter bars, anchors, tie rods, fence and railing posts.
- Grouting of machine and bridge bearing baseplates where the gap is greater than 50mm.
- Use as gap filling sleeperless rail, crane tracks, etc.
- Used as high-end waterproof pile-cap dressing.

Packing

1x20kg kit

2.6 Repoxy G1821

(Three component Solventless High Strength Repair Epoxy Mortar)

Introduction of product

PAMR RePoxy G1821 is a 3 component trowelable epoxy resin mortar designed for general emergency repair of horizontal concrete surface of industrial floors pavements, concrete PQC roads, bridge decks, etc.

Features

- Pre-measured supplied quantity ensures manual error of mixing ratio.
- Excellent adhesion with concrete.
- High pot-life- enables sufficient time for repairing.
- Solvent free- less to no shrinkage
- Low exotherm- enables high thickness of filling.
- Very High strength.
- Cured resin is resistance to a wide range of chemicals.

Area of Application

- Sealing of Cracks grooves in concrete up to 100mm
- Fixing of starter bars, anchors, tie rods, fence and railing posts.
- Grouting of machine and bridge bearing baseplates where the gap is greater than 50mm.
- Use as gap filling sleeperless rail, crane tracks, etc.

Method of Application

- Mixing can be carried out with slow speed (250-400rpm) portable small paddle mixer.
- Mix full quantity of Hardener with full quantity of Resin in bucket for 1-2 minutes.
- Add filler slowly and mix for 2-3 minutes.
- Mix only sufficient materials for immediate requirements.
- Place the mixed material on freshly applied epoxy primer or till the primer is in tacky condition.

Coverage

2.1kg/mm/m²

Packing

1x21kg kit

3. Grouts & Grouting Compounds



3.1 Ultragrout 70

(Single Component, Free Flow, Non-Shrink High Strength cementitious Grout)

Introduction of product

PAMR UltraGrout 70 is a single component packaged dry, hydraulic cement Grout (Non-Shrink), free flowing ready to use cementitious grout.

Features

- High early and ultimate compressive strength (70MPa)
- Free from chloride
- High bond strength
- Pumpable for easy placement
- Can be made as flowable or as a plastic mix depending on the application requirements.
- Non-Shrink Grout fills up voids completely.
- No compaction needed.

Area of Application

- Grouting of:
- Machine base plates
- Bridge bearing,
- Steel /concrete Column foundation
- Joint filling of precast housing
- Groove filling /Gap filling in construction joints of building

Method of Application

- UltraGrout 70 must be mixed by mechanical mortar mixers of slow speed (250– 350 rpm) paddle mixer or revolving drum type mixer but if a large quantity is needed then it is easier to use a mixing vessel.
- For Flowable Mix: W/P Ratio: 0.15 to 0.19
- For Plastic Mix: W/P Ratio: 0.14 to 0.16
- For Dry-pack Mix: W/P Ratio: 0.12 to 0.15

Yield/ Coverage

1800–1900 kg powder is required for 1m³ volume.

Packing

25kg

3.2 Ultragrout 90

(Free Flow, Non-Shrink ultra-High Strength cementitious Precision Grout)

Introduction of product

UltraGrout 90 is a single component packaged dry, hydraulic cement Grout (Non-Shrink), free flowing ready to use cementitious grout.

Features

- High early and ultimate compressive strength (70MPa)
- Free from chloride
- High bond strength
- Pumpable for easy placement
- Can be made as flowable or as a plastic mix depending on the application requirements.
- Non-Shrink Grout fills up voids completely.
- No compaction needed

Method of Application

UltraGrout 70 must be mixed by mechanical mortar mixers of slow speed (250– 350 rpm) paddle mixer or revolving drum type mixer but if a large quantity is needed then it is easier to use a mixing vessel.

- For Flowable Mix: W/P Ratio: 0.11 to 0.14
- For Plastic Mix: W/P Ratio: 0.10 to 0.13
- For Dry-pack Mix: W/P Ratio: 0.09 to 0.12

Yield/ Coverage

1900–2200 kg powder is required for 1m³ volume.

Area of Application

- Grouting of:
- Machine base plates
- Bridge bearing,
- Steel /concrete Column foundation
- Joint filling of precast housing
- Groove filling /Gap filling in construction joints of building

Packing

25kg

3.3 Rockmix GA (Plasticized Expanding Grout Admixture)

Introduction of product

RockMix GA is a plasticized expanding grout admixture for cement grouting to consolidate concrete structures and arrest water ingress through the concrete structures.

Features

- Non-shrink grout due to its expanding characteristics.
- Low water demand
- Provides denser structure.
- Improves the fluidity and flowability of the mix.
- Chloride free.

Area of Application

- PT cable grouting for waterproofing
- Sealing capillary and cracks of concrete
- Consolidating honeycombed concrete structures to arrest ingress of water.
- Sealing construction joint by injection
- Used in areas like basement, podium, roof, tunnels, dams, reservoirs.

Method of Application

- Can be mixed by hand, mechanical mortar mixers of the slow speed (250–350 rpm) paddle mixer.
- Mix cement, Rockmix GA and water for at least 2–3 minutes to get a homogeneous mix.
- Application can be done by injection, pump or simply pouring depending on site requirements.

Dosage

0.5% to 1% by weight of cement.

Packing

250 g and 20kg

3.4 Rockmix CGR (Ready to Use Cementitious Cable Grout)

Introduction of product

Rockmix CGR is ready to use non-shrink PT cable grout premixed with cement and selected additives to provide free flow injectable fluid, having regulated anti-shrinkage property and definite strength.

Conforms to EN 447.

Method of Application

- Add water 25 to 35% by wt. of grout.
- Use slow speed (350–650 rpm) paddle mixer or high shear mixer and mix for 4–6 minutes.
- For cracks of concrete structures or cable grouting, normal procedure of injection is to be followed.
- Use the freshly mixed grout within 30 minutes after mixing.

Features

- Excellent flow without bleeding.
- No separation or settlement.
- Volume expansion to compensate for shrinkage of cement paste.
- Chloride free does not attack pre-stressed cable reinforcement.
- High final strength
- 100% waterproof at >10bar pressure.

Area of Application

- Post tensioning cable grouting,
- Filling of medium to fine cracks, crevices, honey-combed concrete etc.
- Grouting anchor bolts of machine foundation and columns.

Yield/ Coverage

800-2000kg/m³

Packing

25kg

3.5 Repoxy P 18

(Ultra-Low viscosity Solventless High Strength Injectable Epoxy)

Introduction of product

RePoxy P18 is a ultra-low viscosity injectable 2 component epoxy resin designed for crack injection and structural consolidation

Repoxy P18 conforms to ASTM C881 Type 1 & 4 Grade 1 Class B & C

Features

- Ultra-low viscosity (<150mPa) suitable for fine crack/joint sealing.
- Travels longer distance during pressure injection.
- High pot-life (>30minutes)
- Solvent free.
- Very High strength (>70MPa)
- Cured resin is resistance to wide range of acids, alkalis, inorganic and organic compounds.

Area of Application

- Sealing of Cracks in concrete up to 0.2mm-10mm
- Consolidation of concrete structures
- The grouting of machine and bearing base plate where the gap is less than 5mm.

Method of Application

- Mix Resin and hardener as per mixing ratio.
- Inject mixed epoxy with grouting pre-fixed nipples.
- Inject till the material oozed out from adjacent nipple(s).
- Use it within 20 minutes of mixing.
- Grouting can also be done by simply pouring from one side specially for gap filling of machine or bearing bridge bearing plates with a gap of less than 10mm.

Coverage

Depending on site conditions.

Density:

1 to 1.12kg/l

Packing

5kg

3.6 Repoxy P 30

(Low viscosity Solventless High Strength Injectable Epoxy)

Introduction of product

RePoxy P30 is a low viscosity injectable 2 component epoxy resin designed for crack injection and structural consolidation.

PAMR Repoxy P30 conforms to ASTM C881 Type 1 & 4 Grade 1 Class B & C

Features

- Low viscosity (<250mPa) suitable for fine crack/joint sealing.
- Travels longer distance during pressure injection as compared to conventional epoxy grout
- High pot-life (>30minutes)
- Solvent free.
- Very High strength (>70MPa)
- Cured resin is resistance to wide range of acids, alkalis, inorganic and organic compounds.
- Slight flexible

Area of Application

- Sealing of Cracks in concrete up to 0.2mm-10mm
- Consolidation of concrete structures
- The grouting of machine and bearing base plate where the gap is less than 5mm.

Method of Application

- Mix Resin and hardener as per mixing ratio.
- Inject mixed epoxy with grouting pre-fixed nipples.
- Inject till the material oozed out from adjacent nipple(s).
- Use it within 20 minutes of mixing.
- Grouting can also be done by simply pouring from one side specially for gap filling of machine or bearing bridge bearing plates with a gap of less than 10mm.

Coverage

Depending on site conditions.

Density:

1 to 1.12kg/l

Packing

5kg

3.7 Repoxy G521

(Three component Solventless High Strength pourable Epoxy Mortar)

Introduction of product

Repoxy G521 is a moderately viscous, 3 component epoxy resin designed for general purpose crack repair, horizontal groove sealing and structural consolidation

Features

- Pre-measured supplied quantity ensures manual error of mixing ratio.
- Excellent adhesion with most of the building materials.
- High pot-life- enables sufficient time for grouting and repairing.
- Solvent free- less to no shrinkage
- Very High strength- suitable for most types of grouting and foundation

Method of Application

- Mixing can be carried out with slow speed (250-400rpm) portable small paddle mixer.
- Mix full quantity of Hardener with full quantity of Resin in bucket for 1-2 minutes.
- Add filler slowly and mix for 2-3 minutes.
- Mix only sufficient materials for immediate requirements.
- Place the mixed material on prepared surfaces.

Coverage

8kg Kit

Carton : (2x8kg)

Area of Application

- Sealing of Cracks grooves in concrete up to 15mm
- Fixing of starter bars, anchors, tie rods, fence and railing posts.
- Grouting of machine and bridge bearing baseplates.
- Grouting of machine and bearing base plate where the gap is less than 5mm.
- Use as gap filling sleeperless rail, crane tracks, etc.

Packing

5kg

4. Concrete Admixtures



4.1 Ultramix 7500

(Mid-Range Superplasticizer for Concrete)

Introduction of product

UltraMix -7500 is an advanced Polycarboxylate copolymer-based technology for high Performance concrete. It enables concrete to be Produced highly workable with desired slump retention at wide range of dosages.

Features

- Improves cohesiveness of Concrete.
- High degree of finishability with less effort.
- Variation of workability over time is significantly less as compared to conventional admixtures.
- Reduced Capillary absorption.
- Reduced shrinkage and creep.
- Improve adhesion to reinforcing Steel.
- Suitable for natural and manufactured sand.

Standard Followed:

IS: 9103-2007 and ASTM C-494-2010(Type-G).

Area of Application

- Compatible with all cement types
- Single admixture for wide range of concrete
- Concrete using moderate to high SCM.
- To make regular concrete better

Method of Application

- Stir well before use.
- Measure the quantity as per recommended dosage.
- Add with mixing water to the concrete batch.
- Mix for 2-5 minutes depending on the efficiency of mixer.
- Carry out lab trial to fix optimum dosage.

Dosage

0.5 to 1.5% by wt. of cement.

Packing

230kg /1000kg / Tanker

4.2 Ultramix 7100PQ

(Mid-Range Superplasticizer for PQC Concrete)

Introduction of product

Ultramix-7100PQ is specially designed Polycarboxylate copolymer-based superplasticizer for high performance PQC concrete. The use of PAMR UltraMix - 7100PQ is particularly recommended for PQC concrete requiring low workability for a long time without any segregation and bleeding.

Features

- Improves cohesiveness of Concrete.
- High degree of finishability with less effort.
- Very effective for low slump concrete.
- Reduced Capillary absorption.
- Reduced shrinkage and creep.
- Improve adhesion to reinforcing Steel.
- Suitable for natural and manufactured sand.

Standard Followed:

IS: 9103-2007 and ASTM C-494-2010(Type-G).

Method of Application

- Stir well before use.
- Measure the quantity as per recommended dosage.
- Add with mixing water to the concrete batch.
- Mix for 2-5 minutes depending on the efficiency of mixer.
- Carry out lab trial to fix optimum dosage.

Dosage

0.5 to 1.5% by wt. of cement.

Packing

230kg /1000kg / Tanker

- **Standard Followed:**

IS: 9103-2007 and ASTM C-494-2010(Type-G).

Area of Application

- Specially application for PQC and low slump concrete.

4.3 Ultramix 8000

(Super Plasticizing Admixture for High performance Concrete)

Introduction of product

UltraMix - 8000 is an advanced superplasticizer based on selected polycarboxylate copolymers and proprietary additives for high performance concrete. It enables concrete to be produced highly workable low thixotropy with desired flow retention at wide range of dosages.

Features

- Excellent workability retention without significant delay setting.
- Improves cohesion of mix.
- Significant reduction of W/C ratio (up to 35%)
- No Stickiness of mix.
- Compatible with all types of cements and mineral admixtures/binders.

Area of Application

- High performance concrete
- Suitable for high volume fly-ash/GGBFS concrete mix.
- Excellent performance for placing with pump in high-rise building.
- Safely used for high to ultra-high strength concrete (M100).

Method of Application

- Stir well before use.
- Measure the quantity as per recommended dosage.
- Add with mixing water to the concrete batch.
- Mix for 2-5 minutes depending on the efficiency of mixer.
- Carry out lab trial to fix optimum dosage.

Dosage

0.3 to 1.5% by wt. of cement.

Packing

230kg /1000kg / Tanker

4.4 Ultramix 8100S

(Super Plasticizing Admixture for High performance SCC Concrete)

Introduction of product

UltraMix - 8100S is an advanced superplasticizer based on selected polycarboxylate copolymers and proprietary additives for high performance concrete. It enables concrete to be produced highly workable low thixotropy with desired flow retention at wide range of dosages.

Method of Application

- Stir well before use.
- Measure the quantity as per recommended dosage.
- Add with mixing water to the concrete batch.
- Mix for 2-5 minutes depending on the efficiency of mixer.
- Carry out lab trial to fix optimum dosage.

Features

- Excellent workability retention without significant delay setting.
- Improves cohesion of mix.
- Significant reduction of W/C ratio (up to 40%)
- No Stickiness of mix.
- Compatible with all types of cements and mineral admixtures/binders.

Area of Application

- Self-compacting concrete
- High performance concrete
- Suitable for high volume fly-ash/GGBFS concrete mix.
- Excellent performance for placing with pump in high-rise building.
- Safely used for high to ultra-high strength concrete (M100).

Dosage

0.3 to 1.5% by wt. of cement.

Packing

230kg /1000kg / Tanker

4.5 Ultracast HE 5050

(Mid- Range Early Strength Super Plasticizer)

Introduction of product

PAMR UltraCast HE- 5050 is a poly Carboxylate copolymer-based technology for high early strength concrete. It enables concrete to obtain high early compressive strength in 24 hours.

Features

- Improves 24 hours strength of concrete.
- Good workability retention without retardation.
- Free from Chloride, sulphate or other deleterious salts.
- Up to 25% water reduction
- Improves cohesion of fresh concrete.
- Saves 20–30% cement.
- Compatibles with all types of cement and mineral binders.

Area of Application

- Pre- cast concrete industries in Metro rail, pre-cast bridge segments, etc
- Pre-cast building construction
- Pre-cast paver-bloc manufacturing.
- Cold weather concrete

Method of Application

- Stir well before use.
- Measure the quantity as per recommended dosage.
- Add with mixing water to the concrete batch.
- Mix for 2–5 minutes depending on the efficiency of mixer.
- Carry out lab trial to fix optimum dosage.

Dosage

0.5 to 1.5% by wt. of cement.

Packing

230kg /1000kg / Tanker

4.6 Ultracast HE 8050

(High- Range Early Strength Superplasticizer)

Introduction of product

UltraCast HE-8050 is a poly Carboxylate copolymer-based technology for high early strength concrete. It enables concrete obtaining high early compressive strength in 24 hours.

Features

- Improves 24 hours strength of concrete.
- Good workability retention without retardation.
- Free from Chloride, sulphate or other deleterious salts.
- Up to 35% water reduction
- Improves cohesion of fresh concrete.
- Saves 30-40% cement.
- Compatibles with all types of cement and mineral binders.

Area of Application

- Pre- cast concrete industries in Metro rail, pre-cast bridge segments, etc
- Pre-cast building construction
- Pre-cast paver-bloc manufacturing.
- Cold weather concrete.

Method of Application

- Stir well before use.
- Measure the quantity as per recommended dosage.
- Add with mixing water to the concrete batch.
- Mix for 2-5 minutes depending on the efficiency of mixer.
- Carry out lab trial to fix optimum dosage.

Dosage

0.3 to 1.5% by wt. of cement.

Packing

230kg /1000kg / Tanker

4.7 Rockmix 2060

(SNF Based Water Reducing Admixture)

Introduction of product

RockMix – 2060 is an advanced sulfonated polynaphthalene polymer based plasticizing admixture. It is a robust water reducing admixture for concrete and it makes plastic/workable concrete with a reduced W/C ratio.

Features

- Improves cohesiveness of Concrete.
- Reduced Capillary absorption.
- Reduced shrinkage and creep.
- Improve adhesion to reinforcing Steel.
- Suitable for natural and manufactured sand.

Standard Followed:

IS: 9103-2007 and ASTM C494-2010(Type-D&G).

Method of Application

- Stir well before use.
- Measure the quantity as per recommended dosage.
- Add with mixing water to the concrete batch.
- Mix for 2-5 minutes depending on the efficiency of mixer.
- Carry out lab trial to fix optimum dosage.

Dosage

0.6 to 1.5% by wt. of cement.

Packing

230kg /1000kg / Tanker

Area of Application

- General concrete work
- Very good for low slump concrete
- Controlled setting of concrete
- Improves cohesion of concrete mix
- Reduces bleeding and segregation.
- Very good and economical for concrete grades from M10 to M30.

4.8 Rockmix 4160

(SNF Based High Range Water Reducing Superplasticizer)

Introduction of product

RockMix -4160 is an advanced sulfonated polynaphthalene polymer (SNF) based super plasticizing admixture.

Features

- Improves cohesiveness of Concrete.
- Reduced Capillary absorption.
- Reduced shrinkage and creep.
- Improve adhesion to reinforcing Steel.
- Suitable for natural and manufactured sand.

Standard Followed:

IS: 9103-2007 and ASTM C494-2010 (Type-G).

Area of Application

- General concrete work
- Very good for low slump concrete
- Controlled setting of concrete
- Improves cohesion of concrete mix
- Reduces bleeding and segregation.
- Very good and economical for concrete grades from M15 to M50

Method of Application

- Stir well before use.
- Measure the quantity as per recommended dosage.
- Add with mixing water to the concrete batch.
- Mix for 2-5 minutes depending on the efficiency of mixer.
- Carry out lab trial to fix optimum dosage.

Dosage

0.6 to 2% by wt. of cement.

Packing

230kg /1000kg / Tanker

4.9 Tufsil (Miro silica)

Introduction of product

TUFSIL (Micro Silica) is a mineral admixture for concrete, Specific surface area of Tufsil is 15 to 20 times more than the normal OPC.

Method of Application

Shall be added with cement at the time of batching.

Features

- Reduces segregation and bleeding.
- Improves Compressive strength, flexural and tensile strength.
- Reduces thermal cracking caused by the heat of cement hydration.
- Reduces alkali silica reaction of aggregate.
- Reduces Chloride ion penetration.

Area of Application

- For making high performance concrete
- Used in tunnel lining.
- Underground concrete structures
- High strength concrete

Dosage

3-10% by weight of cement

Packing

25kg

5. Tile and Stone Fixing Solutions



5.1 Flooron Tile Adhesive

(Cement based tile adhesive for interior ceramic tile application)

Introduction of product

Polymer modified cement-based adhesive for fixing ceramic tiles on interior floors and walls.

Complies with IS 15477-2019, Type -1T And EN 12004 Type -C1T

Features

- Self-curing adhesive. Resistant to water.
- Slip resistance with longer pot life.
- Excellent adhesion property.
- Available in: White and grey

Area of Application

- For fixing all type of ceramic tiles or interior substrates e.g.,
- Floors and walls of
- kitchen
- bathroom corridors
- lobbies
- meeting rooms/halls etc.

Method of Application

- Mix tile adhesive with recommended amount of water with trowel or slow speed trowel.
- Spread the adhesive with a steel trowel
- Use notched trowel to remove excess adhesive and maintain level and create groove.
- Fix the tile and press it with a slight twisting motion.
- Use a rubber mallet to tap the tile down.

Coverage

50-60sqft /20kg when applied by 6mm notched trowel with a bed thickness of 3mm

Packing

20kg, 50kg

5.2 Vitron Tile Adhesive

(Cement based tile adhesive for interior ceramic tile application)

Introduction of product

Polymer modified cement-based adhesive for fixing ceramic tiles on interior floors and walls.

Complies with IS 15477-2019, Type -I T And EN 12004 Type -C1T

Features

- Self-curing adhesive. Resistant to water.
- Slip resistance with longer pot life.
- Excellent adhesion property.
- White and grey

Area of Application

- For fixing all type of ceramic tiles or interior substrates e.g., Floors and walls of
- kitchen
- bathroom corridors
- lobbies

Method of Application

- Mix tile adhesive with recommended amount of water with trowel or slow speed trowel.
- Spread the adhesive with a steel trowel
- Use notched trowel to remove excess adhesive and maintain level and create groove.
- Fix the tile and press it with a slight twisting motion.
- Use a rubber mallet to tap the tile down.

Coverage

50-60sqft /20kg when applied by 6mm notched trowel with a bed thickness of 3mm

Packing

20kg, 50kg

5.3 Vitron Plus Tile Adhesive

(Cement based tile adhesive for interior large format tile and stone application)

Introduction of product

Polymer modified cement-based adhesive for fixing ceramic tiles on interior floors and walls.

Complies with IS 15477-2019, Type -II T And EN 12004 Type -C1TE

Features

- Self-curing adhesive. Resistant to water.
- Slip resistance with longer pot life.
- Excellent adhesion property.
- Minimum shrinkage
- White and grey

Area of Application

- For fixing all type of large format tiles and stone interior substrates e.g.,
- Floors and walls of
- kitchen
- bathroom corridors
- lobbies
- meeting rooms/halls etc.

Method of Application

- Mix tile adhesive with recommended amount of water with trowel or slow speed trowel.
- Spread the adhesive with a steel trowel
- Use notched trowel to remove excess adhesive and maintain level and create groove.
- Fix the tile and press it with a slight twisting motion.
- Use a rubber mallet to tap the tile down.

Coverage

50-60sqft /20kg when applied by 6mm notched trowel with a bed thickness of 3mm

Packing

20kg, 50kg

5.4 Extron Tile Adhesive

(Cement based tile adhesive for external large format tile and stone application)

Introduction of product

Polymer modified cement-based adhesive for fixing tiles and stone on exterior floors and walls.

Complies with IS 15477-2019, Type -III T And EN 12004 Type -C2TE

Features

- Self-curing adhesive. Resistant to water.
- Slip resistance with longer pot life.
- Extended open time
- Excellent adhesion property.
- Minimum shrinkage
- Excellent water resistant.

Method of Application

- Mix tile adhesive with recommended amount of water with trowel or slow speed trowel.
- Spread the adhesive with a steel trowel
- Use notched trowel to remove excess adhesive and maintain level and create groove.
- Fix the tile and press it with a slight twisting motion.
- Use a rubber mallet to tap the tile down.

Coverage

50-60sqft /20kg when applied by 6mm notched trowel with a bed thickness of 3mm.

Packing

20kg, 50kg

Area of Application

- For fixing all type of large format tiles and stone interior substrates e.g.,
- Indoor and outdoor areas
- Balcony terrace, podium
- Commercial complexes.
- Tile on tile

5.5 Extron Plus Tile Adhesive

(Cement based tile adhesive for external large format tile and stone application)

Introduction of product

High performance polymer modified cement-based adhesive for fixing ceramic tiles on exterior floors and walls including metal surface.

Complies with IS 15477-2019, Type -IV T And EN 12004 Type -C2TE S1

Features

- Self-curing adhesive. Resistant to water.
- Slip resistance with longer pot life.
- Extended open time
- Excellent adhesion property.
- Minimum shrinkage
- Slight deformable.
- White and grey

Area of Application

For fixing all type of large format tiles and stone interior substrates like gypsum/ cement board

etc.

Indoor and outdoor areas

Dry and wet area

Meeting Rooms/Halls etc.

Balcony terrace, podium

Tile on tile

Method of Application

- Mix tile adhesive with recommended amount of water with trowel or slow speed trowel.
- Spread the adhesive with a steel trowel
- Use notched trowel to remove excess adhesive and maintain level and create groove.
- Fix the tile and press it with a slight twisting motion.
- Use a rubber mallet to tap the tile down.

Coverage

50-60sqft /20kg when applied by 6mm notched trowel with a bed thickness of 3mm

Packing

20kg. 50kg

5.6 Ultron Tile Adhesive

(Epoxy based tile adhesive for external large format tile and stone application)

Introduction of product

High performance epoxy based 2K adhesive for fixing stone and tiles external and internal floors and walls including metal surface

Complies with IS 15477-2019, Type -V T And EN 12004 Type -C2TE

Method of Application

- Mix tile adhesive with recommended amount of water with trowel or slow speed trowel.
- Spread the adhesive with a steel trowel
- Use notched trowel to remove excess adhesive and maintain level and create groove.
- Fix the tile and press it with a slight twisting motion.
- Use a rubber mallet to tap the tile down.

Features

- Self-curing adhesive.
- Waterproof adhesive
- Slip resistance with longer pot life.
- Extended open time
- Excellent adhesion property.
- Minimum shrinkage
- Excellent performance for dry and wet areas.
- White in color.

Area of Application

For fixing all type of large format tiles and stone interior substrates e.g.,
Indoor and outdoor areas
Lobbies
Meeting Rooms/Halls etc.
Tile on tile

Coverage

4kg kit covers 7.5 to 8.5sqft with 3mm thick bed applied with 6mm notched trowel.

Packing

4kg
Carton box (4x4kg)

5.7 Ulton Flexi Tile Adhesive

(PU-Epoxy based tile adhesive for external large format tile and stone application for any surface)

Introduction of product

High performance PU -Epoxy modified 2K adhesive for fixing tiles and stones interior and exterior floors and walls including metal surface.

Complies with IS 15477-2019, Type -V T S2 And EN 12004 Type -C2TE S2

Features

- Pre-measured two components.
- Permanent adhesion to various substrate surfaces like metal, woods, Gypsum/cement board
- Waterproof adhesive
- Slip resistance (T)
- Extended open time (E).
- Excellent adhesion property.
- Excellent performance for dry and wet areas.
- Highly flexible and deformable.

Area of Application

- For fixing all type of large format tiles and stone interior substrates e.g.,
- Indoor and outdoor areas
- lobbies
- meeting rooms/halls etc.
- Tile on tile

Method of Application

- Mix tile adhesive with recommended amount of water with trowel or slow speed trowel.
- Spread the adhesive with a steel trowel.
- Use notched trowel to remove excess adhesive and maintain level and create groove.
- Fix the tile and press it with a slight twisting motion.
- Use a rubber mallet to tap the tile down.

Coverage

4kg kit covers 7.5 to 8.5sqft with 3mm thick bed applied with 6mm notched trowel.

Packing

4kg
Carton box (4x4kg)

5.8 Grouton Cementitious Grout (Cement Based Tile Grout)

Introduction of product

Polymer modified thixotropic tile grout based on selected additives, cement and inert fillers.

Features

- Very good water resistance
- Available in various color shades
- Easy to clean,
- Zero VOC
- High open- time.
- Color fast- no discoloration over time.
- No shrinkage cracks.

Area of Application

- Internal and external floors and walls
- Residential and commercial building
- Swimming pools,
- Water tanks
- Applicable for ceramic, vitrified tiles and stone works.

Method of Application

- Mix the recommended quantity of water with a trowel of slow speed paddle mixer.
- Ensure joints are dry and clean.
- Apply with grout floater.
- Clean the surface of tiles before it set.

Coverage

Depends on tile thickness and groove width.

Packing

1kg

5.9 Grouton Epoxy 2K (Epoxy based 2component Tile Grout)

Introduction of product

Two-components high strength chemical resistant waterproof tile grout designed for high precision grouting of tiles and stones for all areas and most of the substrates.

Features

- Waterproof
- Stainproof
- Antifungal and anti -bacterial
- Crack free
- Chemical resistant
- Easy to clean.
- Colorfast.
- Available in wide range of color shades

Area of Application

- Internal and external floors and walls
- Residential and commercial building
- Swimming pools,

- Water tanks
- Applicable for ceramic, vitrified tiles and stone works.

Method of Application

- Shake well the hardener component (bottle)
- Place base in mixing bowl from the pouch and add hardener and mix it thoroughly for 1-2 minutes.
- Ensure the tile joint grooves are dry and clean.
- Apply this mixed grout with grout floater.
- Clean off excess grout before it set.

Coverage

Depends on tile thickness and groove width.

Packing

1kg, 5kg

5.10 ShineOn

(Tile cleaner)

Introduction of product

High performance specially formulated tile cleaning compound for refractory tiles

Features

- Easy to use.
- Quick action
- Remove difficult stains.
- Retain tiles gloss and texture.

Area of Application

- Cleaning of Mosaic, vitrified, ceramic and porcelain tiles.
- Cleaning of bathtub and wash basin stains cleaning of joints in wet areas.

Method of Application

- Dilute with water as recommended in TDS.
- Apply on affected area and wait for 5-10 minutes to complete the reaction with stain.
- For the most difficult stains, use undiluted SHINEON.
- Rub slightly with nylon brush.
- Rinse with water

Coverage

4-6 m² / l

Packing

500ml, 1l

6. Adhesive & Sealants



6.1 Repoxy AEA

(Solventless High Strength Anti-Sagging Epoxy Adhesive)

Introduction of product

RePoxy AEA is a solvent free 2component thixotropic non-sagging Epoxy Adhesive for bonding TPE Based expansion Joint tape, metal plate, plywood, asbestos, swellable water bar, etc. to concrete and other building materials.

Features

- Solvent free system
- High pot-life-
- Suitable for dry and slightly damp surfaces.
- Very High strength.
- No primer is required.
- Contrasting colored parts (White and Black) help to detect uniform mixing.
- No slump (No sagging) – suitable for vertical, overhead and horizontal application.
- Cured resin is resistance to a wide range of acids, alkalis.

Area of Application

- Application if joint sealing tape at expansion joints
- Groove sealing at termination areas of sheet membranes waterproofing
- Groove filling of construction joints
- Spot fixing of tiles and metal plates on concrete
- Placing Swellable water bar
- Repairing / sealing joints of two different /similar building elements.
- Repair of small undulation (0-3mm) of concrete surface.

Method of Application

- Mix full quantity of Hardener with full quantity of Resin.
- Mixing can be carried out with slow speed (250-400rpm) portable small paddle mixer for 1-2 minutes.
- Mix only sufficient materials for immediate requirements.
- Mixed material shall be spread with steel trowel/ spatula to keep 2-3mm thickness.

Coverage

1.7-1.9kg/mm/m²

Packing

3kg, 6 kg

6.2 Repoxy AS

(Thixotropic Anti-sagging Solventless High Strength Epoxy Mortar)

Introduction of product

Repoxy AS is a fast curing, 3 component thixotropic non-sagging solvent free Epoxy mortar for repairing vertical and overhead concrete structures, Sealing of concrete V-grooves, termination points of waterproofing membranes, etc.

Method of Application

- Repoxy AS is supplied as pre-measured quantity.
- Mix full quantity of Hardener with full quantity of Resin and filler.
- Mixing can be carried out with slow speed (250-400rpm) portable small paddle mixer for 1-2 minutes.
- Mix only sufficient materials for immediate requirements

Features

- Solvent free system
- High pot-life-.
- Suitable for dry and slightly damp surfaces.
- Very High strength.
- No primer is required.
- Contrasting colored parts (White and Black) help to detect uniform mixing.
- No slump (No sagging) – suitable for vertical, overhead and horizontal application.
- Cured resin is resistance to a wide range of acids, alkalis.

Area of Application

- Use as repair mortar for vertical and overhead concrete structures like bridge and underpass, Industrial structures, commercial complexes, etc.
- Repair broken areas of concrete edges.
- Can be used to fill tie rod holes and fixing of tie rods, etc.

Coverage

1.8-1.9kg/mm/m²

Packing

6kg kit
Carton: (2x6kg)

6.3 Repoxy BA

(Solvent less epoxy bonding agent for joining old concrete to new concrete)

Introduction of product

Repoxy BA is designed to joint old concrete to new concrete to avoid cold-joints by providing a watertight joint.

Features

- Solvent free system
- High pot-life-.
- Suitable for dry and wet surfaces.
- Very High strength.
- Contrasting colored parts (White and Black) help to detect uniform mixing.
- No sagging – suitable for vertical, overhead and horizontal application.

Area of Application

- It is used to bond old concrete to new concrete.

Method of Application

- Mix full quantity of Hardener with full quantity of Resin.
- Mixing can be carried out with slow speed (250-400rpm) portable small paddle mixer or manually for 1-2 minutes.
- Mix only sufficient materials for immediate requirements.
- Mixed material shall be applied by brush on clean dry surface.

Coverage

2-3 m² /kg

Packing

3kg

6.4 Repoxy SB

(Segmental Bridge Epoxy Adhesive)

Introduction of product

Thixotropic solventless two -part epoxy adhesive for bonding precast concrete segments available in three grades based on setting time and application of different climatic conditions.

Repoxy SB conforms to:
FIP 9/2 and ASTM C 881 specifications

Features

- No sagging
- Impermeable to liquids and water vapor
- Suitable for dry and slight damp concrete surfaces
- Hardening is not affected by humidity.
- Solvent free
- No Shrinkage
- Different colored Parts (for homogeneous mixing).

Area of Application

- Used for segmental bridge construction.
- Used in segmental concrete wind-mill construction
- Used to joint spot bonding of metal, tiles and stone to concrete or steel.

Method of Application

- Mix full quantity of Hardener with full quantity of Resin.
- Mixing shall be carried out with slow speed (250–400rpm) portable small paddle mixer for 1–2 minutes.
- Mix only sufficient materials for immediate requirements.
- Mixed material shall be spread with steel trowel/spatula or manually to keep 1–2mm thickness.

Coverage

1.8 – 1.9 m²/mm

Packing

6kg kit

Carton 12 kg

6.5 Ultraseal PS

(Fuel & Effluents resistant Polysulphide Based Joint Sealant)

Introduction of product

It is a two component, elastomeric, Chemical, Fuel & Effluents resistant polysulphide resin based sealing material which cures by chemical reaction.

Features

- High resistance against industrial chemicals, hydrocarbon fuels
- Cures to a flexible rubber that provides a watertight seal.
- Good resistant to aging
- UV resistance
- Non-toxic
- Excellent adhesion to most aluminium, concrete, marble, stone, brick, masonry block, quarry tiles, timber, metals.
- Available in Gun grades and pour grade.

Method of Application

- Component A & B are premeasured.
- Mix Component A individually in its container by (stirrer) at 300 to 400 rpm until homogeneity is reached. Pour Component B into container of Component A and mix both parts for 2 to 3 mins.
- For pour grade simply pour the mixed material at the application area.
- For gun grade, fill the mixed material in cartridge gun and apply fill the groove.

Coverage

Depending on groove size.
Sp, gravity: 1.5 to 1.7

Area of Application

- Sealing joints on swimming pool decks.
- Parking Garages, Driveways, concrete pavements, airport runways, Concrete Decks, Precast concrete elements.
- Water treatment structures, Swimming Pool Joints, Dams, Reservoirs.
- Sealing of expansion and construction joints in Residential & Commercial buildings.

Packing

4kg.
Carton: (4x4kg)

6.6 Elastoswell (Hydrophilic Swellable Joint Sealant Strip)

Introduction of product

It is based on hydrophilic water swellable elastomeric polymeric strip designed for watertightness of construction joints, pipe joints, cold joints of concrete, available in various dimensions

Features

- Easy and fast installation
- Highly economical as well as reliable sealing of water penetration.
- Long term durability.
- Resistance to various chemicals
- Can be applied on different types of building substrate.
- Available in different sizes, allows design flexibility

Area of Application

- Sealing of construction joints
- Peripheral joints of pipes
- Construction joints of retaining walls, all types of slabs, rafts, etc.

Method of Application

- Repoxy AEP, thixotropic adhesive shall be applied on dry concrete to place the swellable bar.
- Apply the adhesive in such a way that all surface voids and undulation shall be filled and eliminate the gap between dry concrete and swellable water bar.
- Place the Swellable water bar on to the applied adhesive within 1 hour.
- Allow it to dry for at least 12-24 hours before placing of fresh concrete.

Coverage

Depending on the surface profile and dimension of swellable bar.

Specific Gravity:
1.8

Packing

6kg kit
Carton (2x6kg)

6.7 Ultraseal PU (One component PU sealant)

Introduction of product

It is a single component moisture cured PU sealant for sealing expansion joints and dynamic cracks in concrete. Ultraseal PU available in pour grade and gun grade.

Method of Application

- Directly use from the cartridge or use a cartridge gun for application.

Features

- High resistance against industrial chemicals, hydrocarbon fuels
- Excellent elongation and tensile strength.
- Accommodate joint movement up to 35%
- Good resistant to aging
- UV resistance
- Non-toxic
- Excellent adhesion to aluminium, concrete, marble, stone, brick, masonry block, quarry tiles, timber, metals.
- Available in Gun grades and pour grade

Area of Application

- Sealing joints on swimming pool decks.
- Parking Garages, Driveways, concrete pavements, airport runways, Concrete Decks, Precast concrete elements.
- Water treatment structures, Swimming Pool Joints, Dams, Reservoirs.
- Sealing of expansion and construction joints in Residential & Commercial buildings.

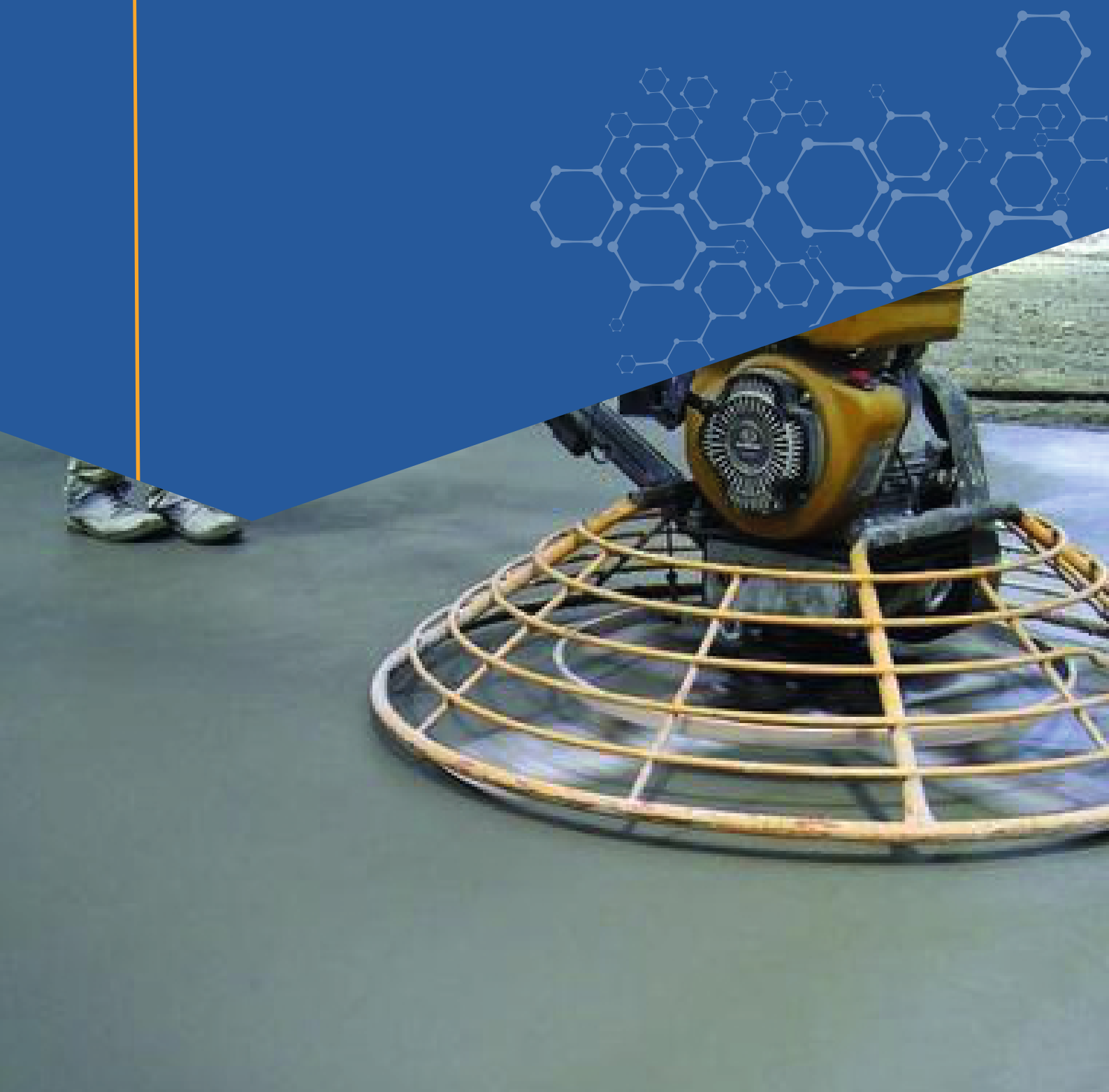
Coverage

Depending on groove size.
Sp, gravity: 1.5 to 1,7

Packing

600ml cartridge.
Carton (20 nos 600ml Cartridges)

7. Floor Hardener



7.1 Rockfloor NM

(Non-metallic Floor Hardener)

Introduction of product

Rockfloor NM is a blend of special cement, aggregates and additives used as ready to use floor hardener.

It is applied on the top surface of freshly laid

Features

- Non-oxidizing
- No staining
- Provides very high wear and abrasion resistant floor surface
- Resistant to dust formation.
- Suitable for wet and dry areas
- Minimum absorption of oil and water.
- Ready to use.
- Chloride free.

Area of Application

- Shop floors, warehouses, Parking lots etc.
- Car parking areas, garages and trucking lanes, container terminals, shops etc.
- Power plants metallurgical industries,
- Production areas of automobile industry, Engineering work etc.
- Exhibition halls, stadiums, factory floors,

Method of Application

After laying of concrete, allow to evaporate bleed water.

As soon as the bleed water disappear, broadcast the floor hardener evenly on the surface and finish it with steel float / power float.

Coverage

Light Traffic:

3 - 3.5 kg/m²

Medium Traffic:

4 - 5 kg/m²

Heavy Traffic:

6 - 7 kg/m²

Packing

25 kg

7.2 Rockfloor M

(Abrasion Resistant metallic Floor Hardener)

Introduction of product

Rockfloor M is based on specially treated grades metallic aggregate for producing a very high abrasion and wear resistant concrete floor and pavement.

Features

- Chloride free
- Excellent wear and abrasion resistant
- Excellent impact resistant
- Compatible with VDF
- Highly resistant to penetration of lubricant oil, fuel oil and grease
- No negative impact to bond with conventional cement based products

Method of Application

Rockfloor M is supplied as special aggregate.

It must be mixed to top layer of concrete at the time of mixing with water. Lay this freshly mixed concrete and finish it with conventional standard method. For proper mix design, contact PAMR Technical team.

Coverage

1.8-2kg /m² for 16 to 18mm thick floor screed.

Area of Application

- Shop floors, warehouses, Parking lots etc.
- Car parking areas, garages and trucking lanes, container terminals, shops etc.
- Power plants metallurgical industries,
- Production areas of automobile industry, Engineering work etc.
- Exhibition halls, stadiums, factory floors,

8. Protective Coating



8.1 Thermo- Safeguard

(UV-resistant Waterproofing and Heat/Solar Reflectance)

Introduction of product

Thermo-Safeguard is a special acrylic polymer, micro hollow sphere based, elastomeric, high-build membrane-coating suitable for metal, concrete, roof and masonry walls providing excellent water, CO₂ impermeability and very high solar reflectivity.

Features

- Excellent resistance to water
- Reduce Air conditioning cost up to 30%
- Up to 2mm crack bridging capacity
- UV Resistance and No deterioration, No color fade
- Easy application by brush, roller, or airless spray machine
- Excellent dirt pick-up resistant
- Self-clean in rainwater.
- Excellent bonding to substrate
- Low VOC
- Solar reflectance reduces heat transmission by up to 15 °C

Area of Application

- Thermo-SafeGuard can be applied to metal, masonry, brick, concrete blockwork, Mortar, bitumen, concrete slab, concrete tiles, fiber cement board, & asbestos roofing.
- For Exterior walls of buildings.

Method of Application

- Stir well with slow speed (300–500rpm) Paddle mixer before using.
- Apply with brush on prepared surfaces.
- Minimum Two coats are recommended.

Coverage

4-6 m²/kg/coat

Packing

5kg, 20 kg

8.2 Ultraguard HE

(Anti-Carbonation & Crack Bridging, Elastomeric Waterproof Coating)

Introduction of product

is a single component highly elastomeric, Anti Carbonation and crack bridging coating. Ultraguard HE is suitable for the protection of concrete and reinforcement from the ingress of water, carbon dioxide (CO₂), SO₂, chloride and other harmful gases.

Features

- High resistance to Carbon dioxide (CO₂), acid rain, and alkali solution.
- up to 2mm crack bridging capacity
- UV Resistance and No deterioration, No color fade
- Excellent waterproofing coating

Method of Application

- Stir well before using Ultraguard HE to achieve a homogeneous consistency.
- The first coat should be applied to the substrate, and the second coat should be applied over the first coat after drying.
- Use Basecoat Primer for best results

Coverage

2-2.4 m² /kg /150 microns coating thickness depending on surface condition.

- Excellent resistant to algae and fungus growth
- Easy application by brush, roller, or squeegee
- Watervapor permeable
- Reduced tendency to dirt picks up and contamination.

Area of Application

- Car parks, commercial and industrial buildings.
- Chemical manufacturing plants, fertilizer manufacturing plants, power plants
- Bridges, flyovers, aqueducts, viaducts, cooling towers and silos

Packing

20kg Bucket



PAMR Industries Private Limited

Corporate Office : Unit No. 2408 & 2413 4th Floor, Express Trade Tower-2,
Sector-132, Noida, Uttar Pradesh-201304

E-mail : info@pamr.in

Website : www.pamr.in | www.cretecent.com | www.zerowet.in

Customer Care No : 1800 12345 12



ISO 9001:2015
Company

